

AGF Total Return Bond Fund



Series MF

Fundamental - Multi-Sector Fixed Income

As of October 31, 2023

Key Reasons to Invest

- The Fund's mandate enables the team to be tactical and focus on what we believe to be the most attractive fixed income opportunities from around the world.
- Offers the potential for higher yields than traditional bonds with exposure to a range of fixed income securities including high yield bonds, convertible bonds and emerging market bonds.
- Use to diversify traditional core bond holdings while seeking higher yields.

Investment Objective

The fund's objective is to provide interest income and capital appreciation by investing in debt securities of governments and other issuers around the world.

Investment Strategy

The portfolio manager seeks to maximize the total return of the portfolio through a bottom-up approach to corporate bond selection and a top-down approach to country allocation, category allocation and duration management. The portfolio manager looks for bond issues that provide an attractive return relative to the risk of each credit.

The Fund may also invest in below investment grade government and corporate debt, i.e., a credit rating below BBB from Standard & Poor's (or an equivalent rating from another rating agency).

AGF Global Bond Fund merged into AGF Total Return Bond Fund on May 15, 2020. The merger may have material effect on the performance of the fund.

The Overall Morningstar Ratings™ and Morningstar Quartile Rankings are series specific as inception date, performance and fee characteristics vary by series. The Overall Morningstar Rating™ measures risk-adjusted returns and is derived from a weighted average of the performance figures associated with its 3-, 5- and 10-year (if applicable) rating metrics.

Source: AGF Investments, Morningstar. This document is not complete without the end disclosures. See last two pages for term definitions.

Overall Morningstar Rating™ ¹	★★★
Morningstar Category	Multi-Sector Fixed Income
Performance Start Date (PSD)	July 9, 2001
Overall Fund Net Assets	\$2,107.1 million
MER ²	1.81%
Trading Expense Ratio	0.00%
Risk Profile	

Benchmark 40% Bloomberg Global High-Yield Bond Index (Hedged to CAD) / 40% Bloomberg Emerging Markets Bond Index (Hedged to CAD) / 20% Bloomberg Global Aggregate Index

¹ Compared with 249 funds in the Multi-Sector Fixed Income category as of October 31, 2023.

Fund Codes/Ticker

Series	CAD	USD
MF	792	492
V	3037	
F	824	724
Q	1211	
W	1421	

Distributions (Series MF)

	2022	2021	2020
\$Amount/Unit	0.07	0.05	0.20
Monthly Frequency ³	Last paid on: 2023-10-31 \$0.008/Unit		

Please refer to AGF.com for distribution information.

Management Fee Tiers

	\$100K- \$250K	\$250K- \$500K	\$500K- \$1M	\$1M- \$3M	>\$3M
Series Q	0.75	0.725	0.70	0.675	0.67
Series W	0.60	0.575	0.55	0.525	0.52

² MER as of March 31, 2023. AGFI may, in its discretion, temporarily waive some or all of the expenses of the Fund, which will result in a reduction in the MER. AGFI may cease to offer any such waiver at any time without notice.

³ The distribution is not guaranteed, may be adjusted from time to time at the discretion of the fund manager and may vary from payment to payment.

Net Compound Returns (CAD) (%)

	1 MO.	3 MO.	6 MO.	YTD	1 YR.	2 YR.	3 YR.	5 YR.	10 YR.	PSD†
Fund	-0.4	-2.1	-3.8	-1.8	0.4	-4.8	-3.5	-0.7	1.1	4.1
Morningstar Quartile Ranking**	1	2	4	4	4	3	3	4	3	-
Number of Funds in the Category	276	268	268	268	268	262	249	214	62	-

† Performance start date as of July 9, 2001. **Past performance is not indicative of future results.** Rates of return for greater than one year have been annualized.

Net Annual Returns (CAD) (%)

	2022	2021	2020	2019	2018	2017	2016	2015	2014	2013
Fund	-8.4	-2.0	4.8	3.4	-0.3	2.6	4.3	1.4	6.9	4.3
Morningstar Quartile Ranking**	2	3	3	3	2	4	4	2	1	3
Number of Funds in the Category	157	156	171	167	147	128	80	45	39	22

Past performance is not indicative of future results.

** The Morningstar category for the Fund changed from High Yield Fixed Income to Global Fixed Income on January 31, 2019, and from Global Fixed Income to Multi-Sector Fixed Income on March 31, 2023.

Morningstar Quartile Rankings are calculated as of October 31, 2023 and subject to change monthly. They are calculated based on the Fund's total return percentile rank compared to other funds in the Morningstar Multi-Sector Fixed Income category. Percentile ranks are then mapped into quartiles with (1) representing 1-25, (2) representing 26-50, (3) representing 51-75 and (4) representing 76-100 percentile ranks.

Top 10 Holdings (% of Total Net Assets)

Total Holdings: 274

Company Name	Country	Weight
Government of United States of America 3.875% August 15, 2033	United States	6.65%
Government of France O.A.T. 3.00% May 25, 2033	France	5.04%
Government of United States of America Inflation Index Linked 2.00% January 15, 2026	United States	3.44%
Government of United States of America 4.625% October 15, 2026	United States	3.31%
Government of United States of America 4.375% August 15, 2043	United States	3.17%
Government of United States of America 4.625% September 30, 2030	United States	3.06%
Government of United States of America 4.125% August 15, 2053	United States	2.97%
Government of Canada 2.25% June 1, 2029	Canada	2.91%
Government of United States of America 4.875% October 31, 2028	United States	2.81%
Government of United States of America Treasury Bill 0.00% November 7, 2023	United States	2.64%
Total		36.0%

Credit Mix

	Portfolio
AAA	14.4%
AA	35.5%
A	11.8%
BBB	16.8%
BB	7.6%
B	7.0%
CCC or Lower	2.1%
Cash	0.5%
Non Rated & Other	4.4%

Investment Mix

	Portfolio
Sovereign (Developed)	55.0%
Investment Grade Corporates	19.1%
High Yield Corporates	14.6%
Sovereign (Emerging Markets Local Currency)	4.0%
Sovereign (Emerging Markets External)	3.1%
Convertible Bonds/Preferred Shares	1.5%
Cash	0.5%
Other	2.3%

Sector Allocation

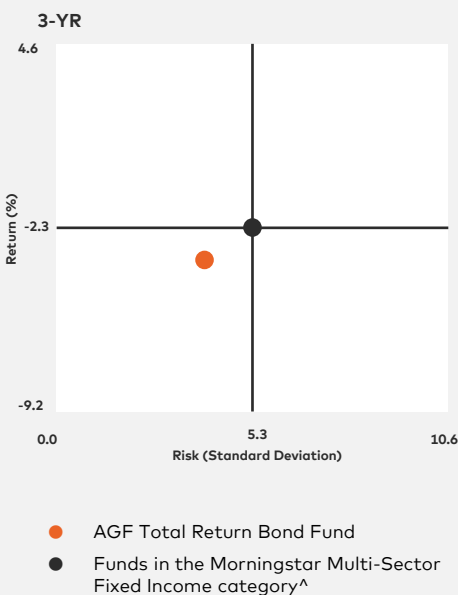
	Portfolio
Financial Institutions	8.8%
Communications	4.8%
Consumer Non-Cyclical	4.2%
Consumer Cyclical	3.8%
Basic Industry	3.6%
Capital Goods	3.3%
Energy	3.0%
Transportation	1.5%
Technology	1.2%
Utility	0.9%
Other Industrial	0.2%

Sector allocation is based on the exposure of corporate securities in the Fund.

Fixed Income Allocation

	Portfolio
Treasury	55.5%
Corporate	34.8%
Government-Related	6.5%
Short Term	2.6%
Securitized	0.2%
Cash	0.5%
Other	-0.1%

Risk vs. Returns



^ Morningstar category performance is calculated as the average return of a portfolio constructed of all series of all funds in the category as of the end of each month.

Source: AGF Investments, Morningstar. This document is not complete without the end disclosures. See last two pages for term definitions.

Country Allocation

	Portfolio
United States	52.0%
Canada	18.0%
France	5.9%
Germany	3.4%
Japan	3.1%
Mexico	2.8%
Cash	0.5%
Other	14.4%

Currency Allocation

	Portfolio
Canadian Dollar	70.2%
US Dollar	12.2%
Euro	7.6%
Japanese Yen	3.1%
Other	7.0%

Portfolio Characteristics

	Portfolio
Payment Frequency	Monthly
Distribution - Trailing 12 Months	2.7%
Current Yield	4.3%
Yield to Maturity	6.1%
Average Term to Maturity	6.8
Modified Duration	5.0
Average Credit Quality	A
Turnover	193.7%

Risk Characteristics

(3 & 5 Year Annualized)

Portfolio	3-Year	5-Year
Standard Deviation	4.0%	4.2%
Sharpe Ratio	-1.36	-0.55
Beta	0.50	0.55
Tracking Error	3.9%	3.7%
Upside Capture	41.9%	40.6%
Downside Capture	62.8%	60.1%

Morningstar Multi-Sector Fixed Income Category [^]	3-Year	5-Year
Standard Deviation	5.3%	6.2%
Sharpe Ratio	-0.79	-0.20
Beta	0.42	0.17

[^] Morningstar category performance is calculated as the average return of a portfolio constructed of all series of all funds in the category as of the end of each month. Source: AGF Investments, Morningstar. This document is not complete without the end disclosures. See last two pages for term definitions.

Investment Management Team

The AGF Fixed Income team is a multi-disciplinary team based in Toronto, Canada that manages assets on behalf of retail and institutional clients. We seek added value in fixed income by leveraging our long-tenured expertise in our core competencies. We focus on strategically allocating across fixed-income categories and currencies. We believe our strengths lie in the use of global fixed-income specialists to capture potential investment opportunities and that our disciplined methodology, using proprietary models and fundamental research, enables us to identify inefficiencies across global fixed-income markets.

Portfolio Managers



Tristan Sones, CFA®
 Co-Head of Fixed Income & Portfolio Manager
 AGF Investments Inc.
 • Industry Exp: since 1993
 • Firm Exp: since 1993



Tom Nakamura, CFA®
 Co-Head of Fixed Income, Currency Strategy & Portfolio Manager
 AGF Investments Inc.
 • Industry Exp: since 1998
 • Firm Exp: since 1998

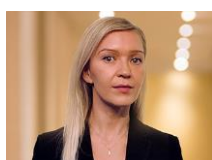
Investment Team/Resources



David Stonehouse, MBA, CFA®
 Head of North American & Specialty Investments & Portfolio Manager
 AGF Investments Inc.
 • Industry Exp: since 1996
 • Firm Exp: since 2011



Jean-Sébastien Nadeau, MBA, CFA®
 Co-Portfolio Manager
 AGF Investments Inc.
 • Industry Exp: since 2012
 • Firm Exp: since 2016



Izabela Siwoski Uliana, LLB (hons), CIM
 Multi-Asset Portfolio Specialist
 AGF Investments Inc.
 • Industry Exp: since 2006
 • Firm Exp: since 2022



Daniel Chivu, CIM
 Multi-Asset Portfolio Specialist
 AGF Investments Inc.
 • Industry Exp: since 2016
 • Firm Exp: since 2023

Fixed Income Analyst Team

Conor McKinnon*
 Credit Analyst

Jie Shi, MFE
 Analyst

Sherry Xu, MBA, CFA®
 Foreign Exchange Analyst

* AGF Investments LLC. The AGF Fixed Income Analyst Team consists of individuals from AGF Investments Inc. and AGF Investments LLC. AGF Investments entities only provide investment advisory services or offer investment funds in the jurisdiction where such firm, individuals and/or product is registered or authorized to provide such services.

About AGF Management Limited

Founded in 1957, AGF Management Limited (AGF) is an independent and globally diverse asset management firm. Our companies deliver excellence in investing in the public and private markets through three distinct business lines: AGF Investments, AGF Private Capital and AGF Private Wealth.

AGF brings a disciplined approach, focused on incorporating sound, responsible and sustainable corporate practices. The firm's collective investment expertise, driven by its fundamental, quantitative and private investing capabilities, extends globally to a wide range of clients, from financial advisors and their clients to high-net worth and institutional investors including pension plans, corporate plans, sovereign wealth funds, endowments and foundations.

Headquartered in Toronto, Canada, AGF has investment operations and client servicing teams on the ground in North America and Europe. AGF trades on the Toronto Stock Exchange under the symbol AGF.B.

About AGF Investments

AGF Investments represents AGF's group of companies who manage and advise on a variety of investment solutions managed by its fundamental and quantitative investing teams.

AGF Investments Inc. is a wholly-owned subsidiary of AGF Management Limited and conducts the management and advisory of mutual funds in Canada.

Disclosures

All information is provided by AGF Investments in Canadian dollars as of October 31, 2023, unless otherwise indicated. The performance presented is net of fees. Rates of return for periods greater than one year have been annualized. Numbers may not add up to 100% due to rounding.

Commissions, trailing commissions, management fees and expenses all may be associated with mutual fund investments. Please read the prospectus before investing. The indicated rates of return are the historical annual compounded total returns including changes in share or unit value and reinvestment of all dividends or distributions and do not take into account sales, redemption, distribution or optional charges or income taxes payable by any securityholder that would have reduced returns. Mutual funds are not guaranteed, their values change frequently and past performance may not be repeated.

This material is for informational and educational purposes only. It is not a recommendation of any specific investment product, strategy, or decision, and is not intended to suggest taking or refraining from any course of action. It is not intended to address the needs, circumstances, and objectives of any specific investor. This information is not meant as tax or legal advice. Investors should consult a financial advisor and/or tax professional before making investment, financial and/or tax-related decisions.

For a summary of the risks of an investment in a particular AGF Fund, please see the specific risks set out in the fund's prospectus. Market conditions may change, impacting the composition of a portfolio. AGF Investments assumes no responsibility for any investment decisions made based on the information provided herein.

Investments denominated in foreign currencies are subject to fluctuations in exchange rates, which may have an adverse effect on the value of the investments, sale proceeds, and on dividend or interest income. Investors may not necessarily recoup the full value of their original investment.

Holdings are subject to change and do not represent all of the securities purchased, sold or recommended for the portfolio. It should not be assumed that investments in the securities identified were or will be profitable and should not be considered recommendations by AGF Investments.

The payment of distributions should not be confused with a fund's performance, rate of return or yield. If distributions paid by the fund are greater than the performance of the fund, the original investment will shrink. Distributions paid as a result of capital gains realized by a fund, and income and dividends earned by a fund, are taxable to the investor in the year they are paid. The adjusted cost base will be reduced by the amount of any returns of capital. If the adjusted cost base falls below zero, the investor will have to pay capital gains tax on the amount below zero.

"Bloomberg®" and Bloomberg Emerging Markets USD Aggregate Bond Index are service marks of Bloomberg Finance L.P. and its affiliates, including Bloomberg Index Services Limited ("BISL"), the administrator of the index (collectively, "Bloomberg") and have been licensed for use for certain purposes by AGF Management Limited and its subsidiaries. Bloomberg is not affiliated with AGF Management Limited or its subsidiaries, and Bloomberg does not approve, endorse, review or recommend AGF Total Return Bond Fund. Bloomberg does not guarantee the timeliness, accurateness, or completeness, of any data or information relating to AGF Total Return Bond Fund.

© 2023 Morningstar Inc., All Rights Reserved. The information contained herein: (1) is proprietary to Morningstar and/or its content providers; (2) may not be copied or distributed; and (3) is not warranted to be accurate, complete or timely. Neither Morningstar nor its content providers are responsible for any damages or losses arising from any use of this information. Past performance is no guarantee of future results.

Disclosures

In order to invest in and maintain participation in the AGF Preferred Pricing Program, a Household (which may consist of a single investor) must meet the minimum investment requirements of: (i) at least \$100,000 in one eligible mutual fund; or (ii) at least \$250,000 in Household assets across multiple eligible funds, based on the higher of book value or market value. All Preferred Pricing management fee reductions are at AGF's discretion and depend on a number of factors, including the size of the investment, nature of the investment and the fees charged by the applicable series/fund. Eligible series and funds are determined by AGF and may change from time to time at AGF's discretion. Tier level discounts apply only to the dollar amount(s) grouped in each particular tier.

© TM The "AGF" logo and all associated trademarks are registered trademarks or trademarks of AGF Management Limited and used under licence.

This report may not be reproduced (in whole or in part), transmitted or made available to any other person without the prior written permission of AGF Investments Inc.

Published: November 10, 2023.

Term Definitions

Average Credit Quality

A weighted average of credit ratings on all fixed income securities in a portfolio.

Average Term to Maturity

Average remaining time of each security or instrument in a portfolio to reach its maturity.

Beta

A measure of a fund's sensitivity to market movements (as represented by a benchmark index). The benchmark index has a Beta of 1.0. A Beta of more (less) than 1.0 indicates that a fund's historical returns have fluctuated more (less) than the benchmark index. For example, a Beta of 1.10 shows that the fund performed 10% better than its benchmark index in up markets and 10% worse in down markets, assuming all other factors remain constant.

Current Yield

The annual income (interest or dividend) of a security divided by its price. The current yield of a portfolio is the weighted average of the current yield of the applicable holdings in a portfolio.

Downside Capture (Ratio)

The Downside Capture Ratio is calculated by taking the portfolio's return and dividing it by the benchmark's return in periods when the benchmark return was negative. A Downside Capture Ratio of less than 100% is considered desirable.

Management Expense Ratio (MER)

The Management Expense Ratio, commonly referred to as MER, is a measure of the total expenses (fees and other costs) borne by the mutual fund or ETF, expressed as a percentage of the fund's net asset value. The ratio is calculated by dividing the total annual expenses by the average net asset value of the fund for the given year.

Modified Duration

A measure of the sensitivity of a bond's price to changes in interest rates. The modified duration of a portfolio is the weighted average of the modified duration of the applicable holdings in a portfolio.

Risk Profile

The Risk Profile is based on the historical volatility of a fund, as measured by the 10-year annualized standard deviation of the 10-year average returns of the fund. The investment risk level is required to be determined in accordance with the Canadian Securities Administrators' standardized risk classification methodology.

Sharpe Ratio

Sharpe Ratio characterizes how well the return of a fund compensates the investor for each unit of absolute risk they assume, as measured by the Standard Deviation of the fund. The greater a fund's Sharpe Ratio, the better its risk-adjusted performance has been.

Standard Deviation

A statistical measure of the range/dispersion of a fund's performance. The more variable the returns, the larger the Standard Deviation. When a fund has a high Standard Deviation, it means that its range of performance was wide for the given period, i.e. greater historical volatility. Standard Deviation does not predict the future volatility of a fund.

Tracking Error

The Tracking Error represents a fund manager's added value variability. It reports the difference between the return received and that of the benchmark being compared to. It is reported as a Standard Deviation percentage difference.

Trading Expense Ratio (TER)

The total gross expenses divided by the fund's average net assets.

Term Definitions

Turnover (Ratio)

The portfolio Turnover Ratio is the rate at which assets in a fund are bought and sold by the portfolio managers. It is calculated as the minimum of securities bought or sold divided by the average assets over the period.

Upside Capture (Ratio)

The Upside Capture Ratio is calculated by taking the portfolio's return and dividing it by the benchmark's return in periods when the benchmark return was positive. An Upside Capture Ratio of greater than 100% is considered desirable.

Yield to Maturity

The annual rate of return anticipated on a bond if it is held until the maturity date. The yield to maturity of a portfolio is the weighted average of the yield to maturity of the applicable holdings in a portfolio.

Yield to Put

The total return anticipated on a bond if it is held to its earliest possible put date (i.e., the date that the bondholder has the option to sell the bond back to the issuer).